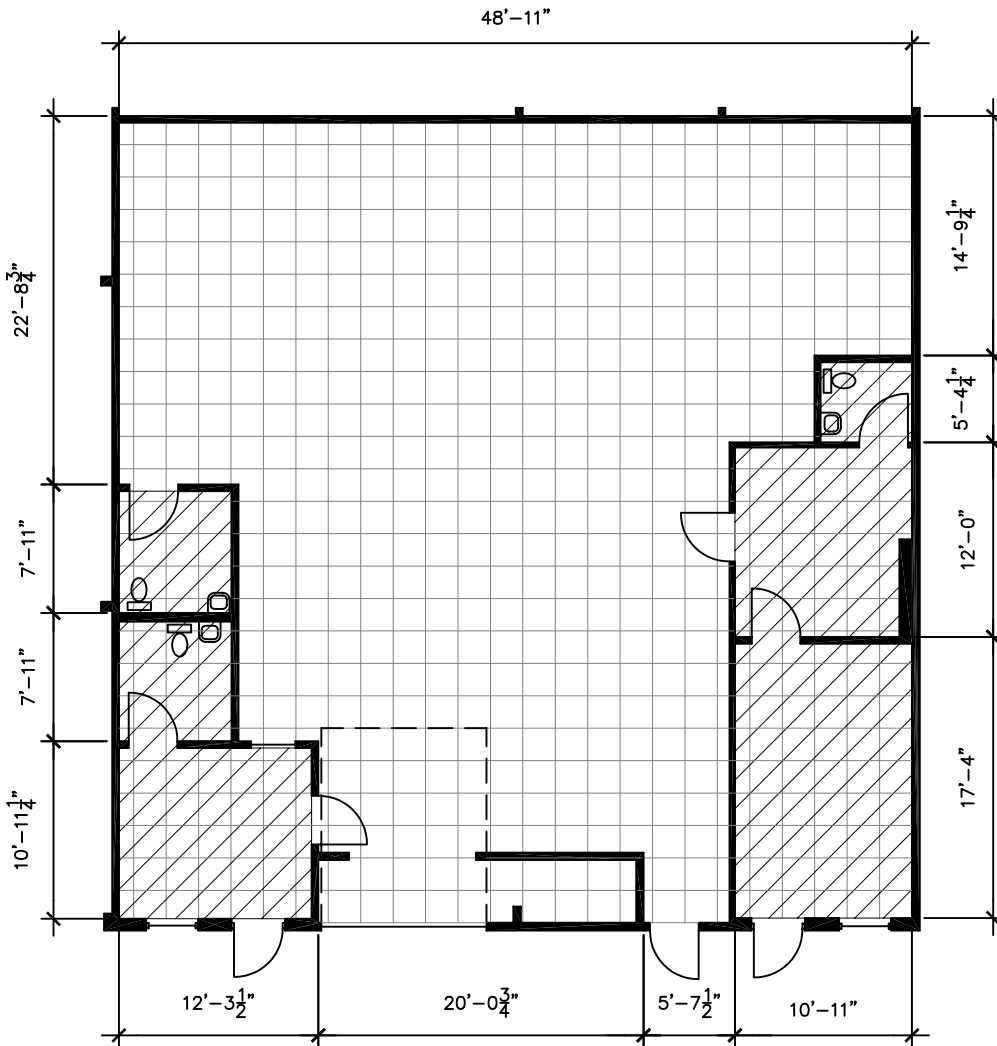
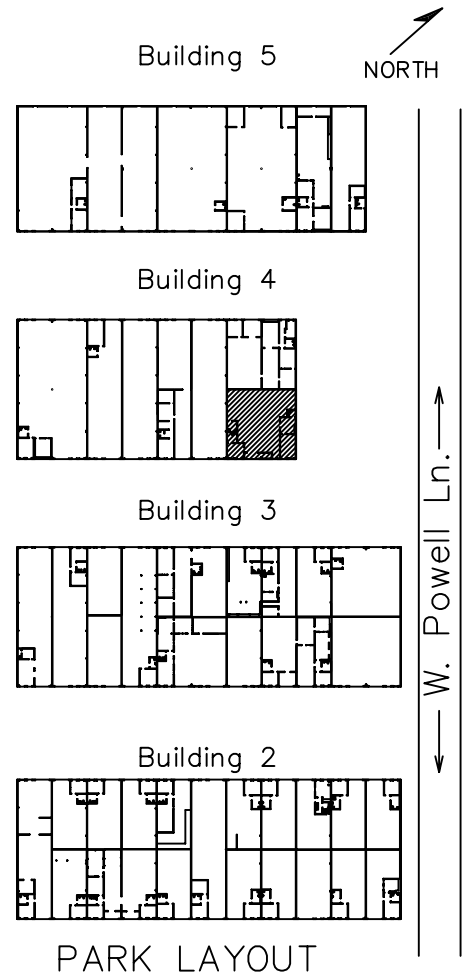


Office SF = 515  
 Warehouse SF = 1,966  
 Total RSF = 2,481



NOTE:  
 Overlying grid is 2' x 2'  
 Not to scale.

▨ Air Conditioned Area



Drawing for:  
 L.H. LAYNE COMPANY  
 404 W. Powell, Ste. 202  
 Austin, Texas 78753  
 Ph: 252-9900 Fax: 252-9902

SUITES 401/402  
 AUSTECH BUSINESS PARK  
 501 W. POWELL LN.  
 RENTABLE AREA: 2,481 S.F.

THE MEASUREMENTS AND FLOOR PLANS ARE ACCURATE TO WITHIN 2% INTERIOR WALLS AND DEMISING WALLS ARE ASSUMED TO BE 5" THICK.  
 Project No.: 20306.01  
 Rev. Date: Jan. 27, 2007  
 ©2007

† DIMENSIONS †  
 FLOOR PLANS  
 7301 Waterline Rd.  
 Austin, Texas 78731  
 Ph: 342-0114 Fax: 342-1965