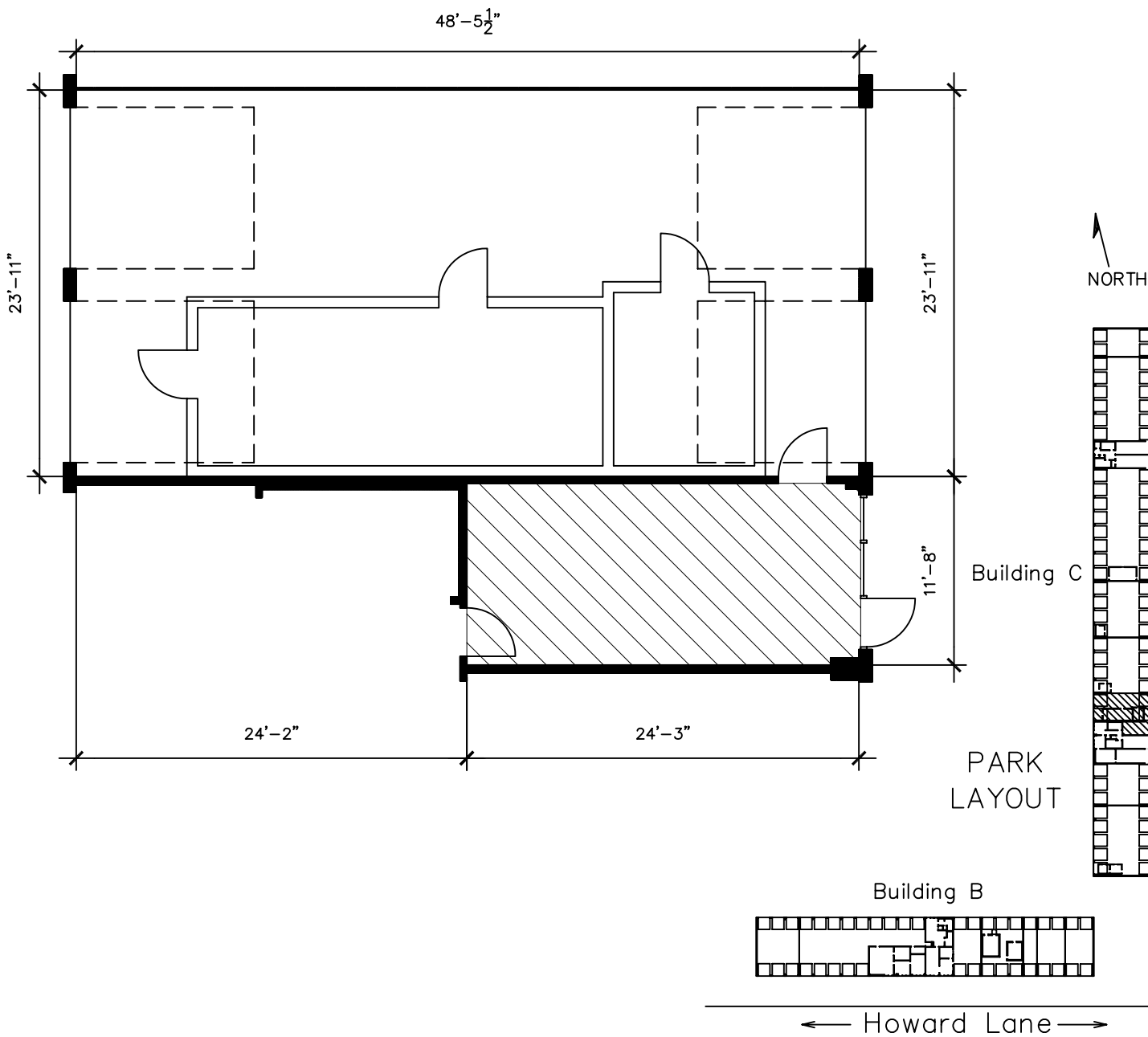


Office SF = 295
 Warehouse SF = 1,213
 Total RSF = 1,508

NOTE:
 Overlying grid is 2' x 2'
 Not to scale.

 Air Conditioned Area



Drawing for:
 L.H. LAYNE COMPANY
 404 W. Powell, Ste. 202
 Austin, Texas 78753
 Ph: 252-9900 Fax: 252-9902

BLDG. C SUITE 11-13
 HOWARD ROUTE CENTER
 1120 W. HOWARD LN.
 RENTABLE AREA: 1,508 S.F.

THE MEASUREMENTS AND
 FLOOR PLANS ARE ACCURATE
 TO WITHIN 2%. INTERIOR WALLS
 AND DEMISING WALLS ARE
 ASSUMED TO BE 5" THICK.
 Project No.: 20306.06
 Date: May 16, 2003
 ©2003

† DIMENSIONS †
 FLOOR PLANS
 4412 Spicewood Spgs. Rd., Ste. 803
 Austin, Texas 78759
 Phone: 342-0114 Fax: 342-1965