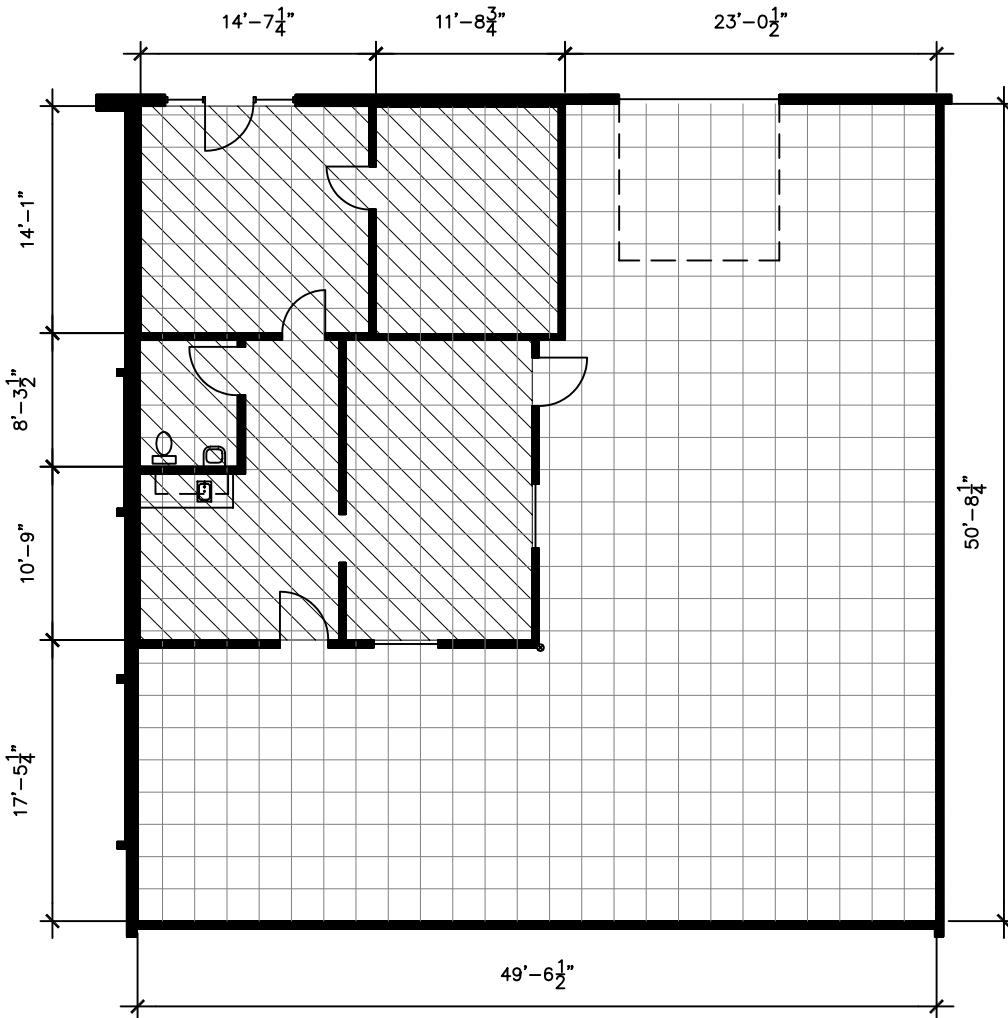
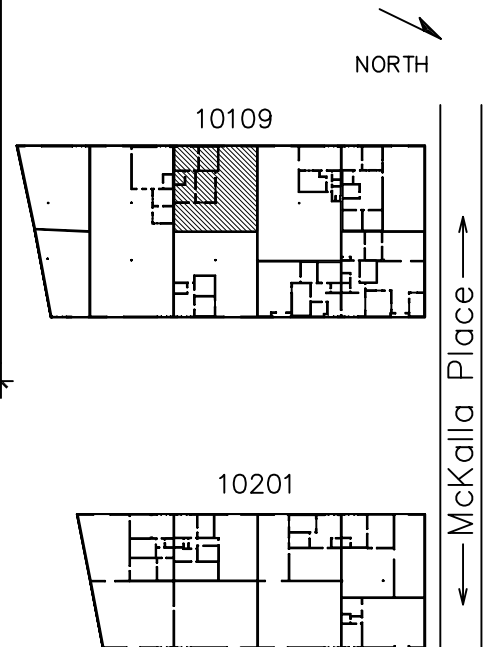


Office SF = 830  
 Warehouse SF = 1,747  
 Total RSF = 2,577



NOTE:  
 Overlying grid is 2' x 2'  
 Not to scale.

 Air Conditioned Area



PARK LAYOUT

<p>Drawing for:  <b>L.H. LAYNE COMPANY</b>          404 W. Powell, Ste. 202          Austin, Texas 78753          Ph: 252-9900 Fax: 252-9902</p>	<p style="text-align: center;"><b>SUITE C</b>  <b>MCKALLA - LAYNE</b>          10109 MCKALLA PLACE          RENTABLE AREA: 2,577 S.F.</p>	<p>THE MEASUREMENTS AND FLOOR PLANS ARE ACCURATE TO WITHIN 2%. INTERIOR WALLS AND DEMISING WALLS ARE ASSUMED TO BE 5" THICK.          Project No.: 20306.05          Date: April 25, 2003          ©2003</p>	<p style="text-align: center;">† DIMENSIONS †  <b>FLOOR PLANS</b></p> <p>4412 Spicewood Spgs. Rd., Ste 803          Austin, Texas 78759          Ph: 342-0114 Fax: 342-1965</p>
--	---	--	---